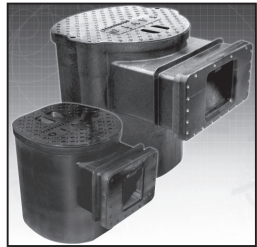


Customer Service Information



Savio Engineering, Inc.
Albuquerque, New Mexico USA
<http://www.savio.cc> • email: support@savio.cc

Innovative, precision engineered solutions
Advanced water gardening products for healthy, clean living ponds.



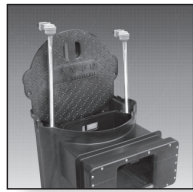
Skimmerfilters®



Livingponds® Filters



Pond Packages®



Uvinex™ system



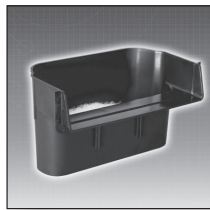
Water Master™ Pumps



Waterfall Well™



Springflo Filter Media™



FilterWeirs™



Radiance™ Lighting



Black Foam



Pond Free® Packages

SAVIO Mechanical Water Leveler

For use with the Savio Skimmerfilter® (SS0000)

Not suitable for use with Compact Skimmerfilters®.



07-SV-085

Read entire instructions prior to assembly and operation.

K1003L • K1003R

OPERATING MANUAL

Operating Capacities

The Savio Mechanical Water Leveler Kit is specifically designed to operate with the Savio Skimmerfilter.® This kit will provide a regulated flow of water to maintain optimal water level and can be connected to copper, plastic or iron water supply lines up to 1" in diameter.

COMPONENTS:

- Mini-Float Valve • Baffle Shield • Self Tapping Hose Kit

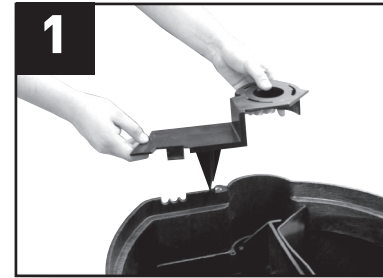


TOOLS NEEDED:

- Phillips Screwdriver • Crescent Wrench or Pliers

If the Savio Skimmerfilter® is in operation, turn off the pump and unplug UV before installing this kit.

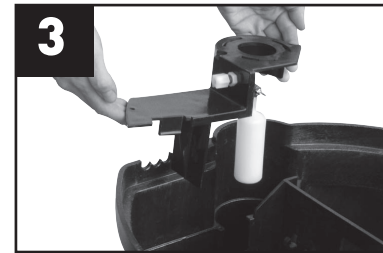
Assembly and Installation



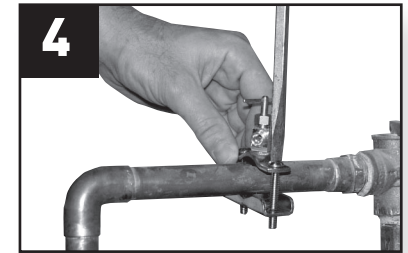
1 Remove existing baffle shield from Skimmerfilter.® Save screws for later.



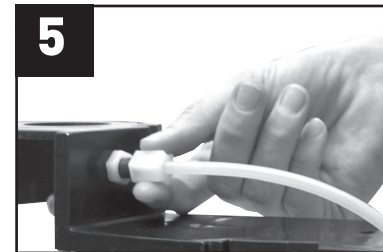
2 Tighten thumb screw on float valve so that valve hangs at a 90° angle. Tighten white nut to secure float valve.



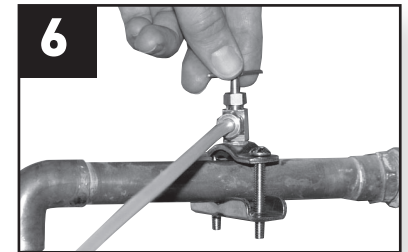
3 Install water leveler assembly. Use screws from Step 1 to secure.



4 Turn off water source. Attach self tapping hose kit to water line. Follow instructions included with hose kit. Extra fittings have been included to allow for greater versatility.



5 Connect hose to Water Leveler Kit.



6 Turn on water source and monitor water level to ensure float valve is operating correctly. Turn on pump to resume normal Skimmerfilter.® operation.