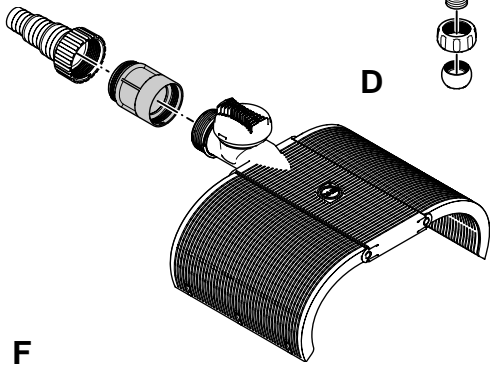
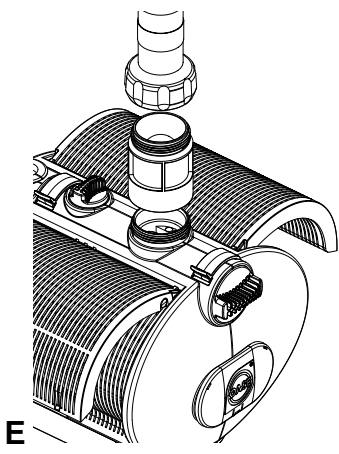
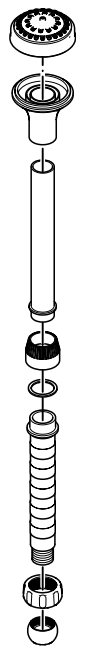
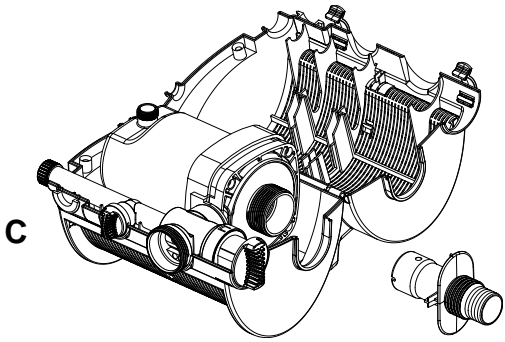
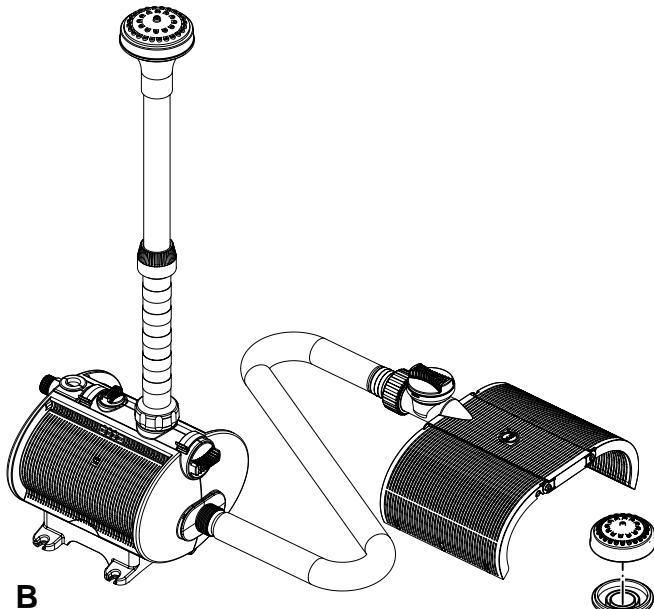
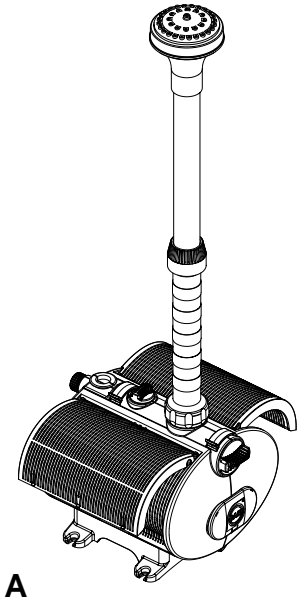


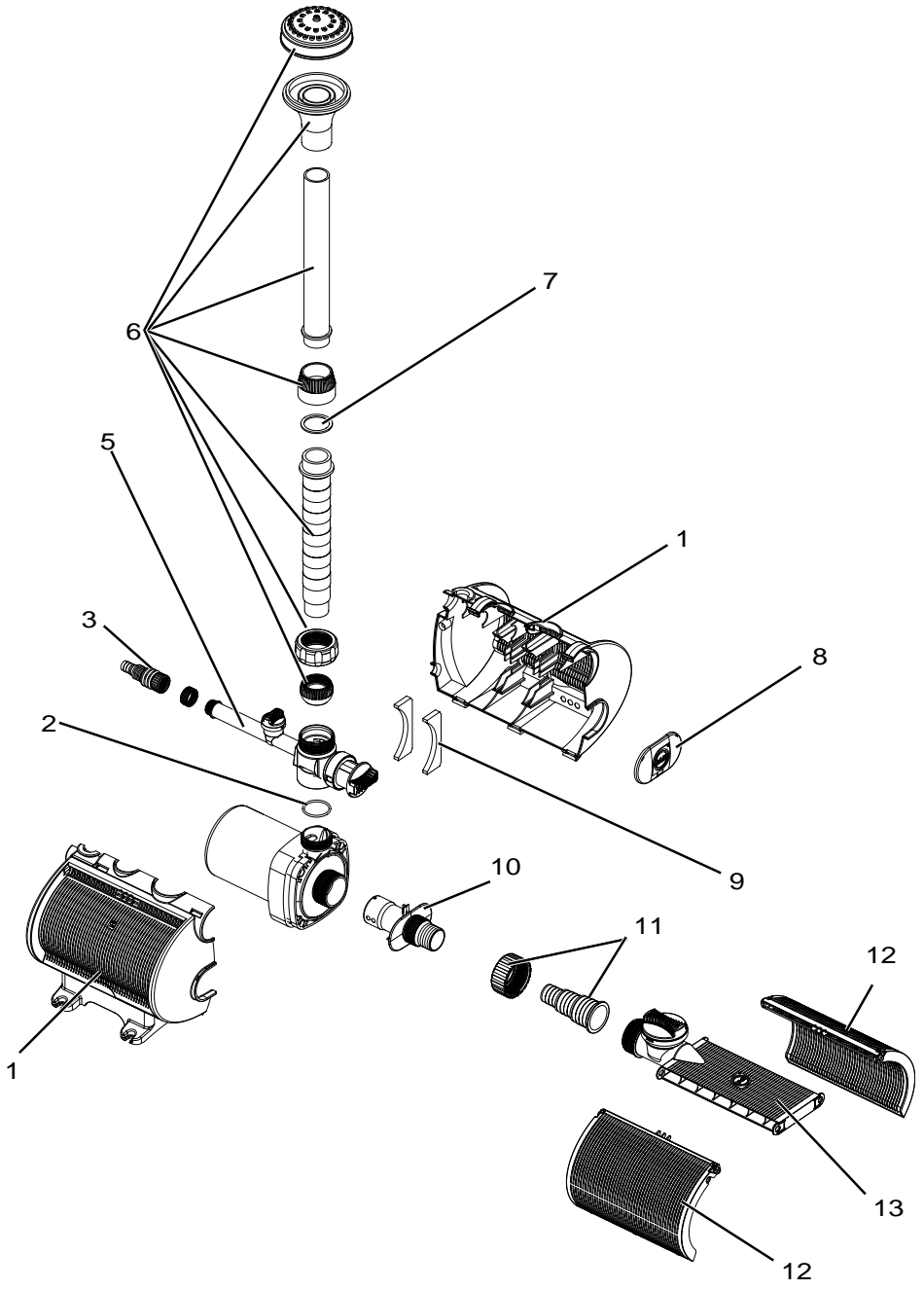
Warranty, Safety and
Operating Instructions

1100 – 2600



Oase
LIVING WATER





G

English

1. Safety and Operating Instructions	5
2. Operational Range	5
3. Safety Instructions	5
4. Electrical Requirements	6
5. Do's and Don'ts	6
6. Placing in service	7
7. Playing with the water	8
8. Maintenance/Cleaning	9
9. Winter Storage	10
10. Troubleshooting	10
11. Replacement parts	11
12. Customer Service	11
13. LIMITED WARRANTY	11

Français

1. Mode d'emploi et consignes de sécurité	13
2. Limites d'opération	13
3. Consignes de sécurité	13
4. Exigences électriques	14
5. A faire et à ne pas faire	14
6. Mise en service	15
7. Jeux d'eau	16
8. Maintenance/Nettoyage	18
9. Entreposage hivernal	19
10. Dépannage	19
11. Pièces de rechange	20
12. Service à la clientèle	20
13. GARANTIE	20

Español

1. Instructivo De Seguridad Y De Operaciones	22
2. Rango operativo	22
3. Instrucciones de seguridad	22
4. Requisitos Eléctricos	23
5. Que Hacer y Que No Hacer	23
6. Puesta en funcionamiento	24
7. Variar el surtidor de agua	26
8. Mantenimiento/Limpieza	27
9. Almacenamiento de invierno	28
10. Solución en caso de averías	28
11. Piezas de repuesto	29
12. Servicio al consumidor	29
13. GARANTIA	30



1. Safety and Operating Instructions

OASE Nautilus 1100 – 2600

Thank you for purchasing an OASE water feature pump. OASE pumps were developed through extensive research and are known world wide for their high-quality construction, energy-efficiency, and environmental safety features. OASE water feature pumps do not contain any oil, instead they are cooled and lubricated by water only. Please read the following instructions carefully and thoroughly. Failure to comply with these requirements may result in pump damage or failure, and could cause serious or fatal injury. Close attention to these guidelines will result in many years of pleasure from your OASE pump.

2. Operational Range

Application:

- Outdoor use
- Koi (Japanese carp species) fish basins
- Garden ponds
- Water features
- The pump is suitable for the conveyance of water from garden ponds and fish basins and can be used with various water features.
- This product is not intended for use by children without proper supervision.
- Keep out of the reach of children.

Water Temperature Range:

- 40-85 degrees Fahrenheit (4-35 °C)

Maximum Water Depth:

- 13 ft (4,0 m)



3. Safety Instructions

- Check that the electrical data of the power supply network and that on the type plate coincide.
- Only connect the pump to a grounded power **outlet** (GFI) in accordance with the valid local or national electrical codes (NEC, UL, CSA, IEC...). Contact a qualified electrician with any questions.
- Do not use additional components, extension or connection cables or adapters, which are not grounded.
- Never operate the pump while people are in the water.
- **Be sure that** Garden ponds meet the local and national installation regulations. Contact a qualified electrician!
- Remove the power cable from the electrical socket prior to handling the pump.
- **Note!** In the event of a fault, a maximum of 10 switch-on/off cycles are carried out. Should this prove unsuccessful, the pump will switch off after approx. 40 seconds. Remove the power plug from the electrical socket and clean pump if necessary.
- **Never** carry or pull the pump by the power cord.
- **Always** keep the connection points (power plug) dry.
- Do not operate the pump if cable or casing shows any signs of damage.



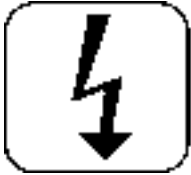
- Lay the connection cable such that it is protected against possible damage.
- To avoid potentially dangerous situations, only the manufacturer is allowed to make repairs or cable replacements.

CAUTION: This pump is for garden use. Do not use in swimming pools, spas, hot tubs, etc. Running dry will inevitably cause almost immediate failure and void all warranties implied or otherwise.



4. Electrical Requirements

WARNING: OASE pumps **MUST** be connected to a properly grounded and GFCI (Ground Fault Circuit Interrupter < 30mA) protected 110-120 Volt AC circuit only. The OASE Atlantis Pumps are equipped with a 20-foot 3-prong electrical cord. If the electrical cord provided is not sufficient we suggest that you consult a certified electrician and have them install an additional GFCI outlet within reach of the cord. Consult your local power authority for electrical codes or requirements. Avoid excessive flexing of or abrasion to the electrical cord. Any alteration to an OASE pump will result in non-compliance with UL and Canadian UL listings and requirements. In such instances all warranties implied or otherwise are deemed immediately void.



WARNING: Risk of electric shock - This pump is supplied with a grounding conductor and grounding-type attachment plug. To reduce the risk of electric shock, be certain that it is connected only to a properly grounded, grounding-type receptacle.



5. Do's and Don'ts

- **Do** disconnect the plug from the receptacle before moving or cleaning the pump.
- **Do** disconnect the plug from the receptacle before entering the water area.
- **Do** have all electrical outlets installed and serviced by a licensed electrician.
- **Do** disconnect the pump from the electrical outlet at the first sign of any problem.



- **Don't** use the pump when there are people in the water.
- **Don't** cut the cord or remove the plug from the cord.
- **Don't** remove the grounding pin from the plug.
- **Don't** carry or pull the pump by the electrical cord.
- **Don't** use extension cords.
- **Don't** attempt to open the pump/motor enclosure.
- **Don't** remove any labels from the pump or electrical cord.
- **Don't** pinch, twist or damage the electrical cord. A minor cut even if only in the outer shell could allow water to reach the motor enclosure and damage the pump. If you notice any damage to the cord remove the pump and store in a dry place. Consult your local OASE Dealer for further instructions. Please note that any damage to the electrical cord will void all warranties and could cause serious electrical shock hazard.



6. Placing in service

- You must read and observe the safety instructions (chap. 3) before placing in service!
- The Nautilus turns on automatically when you establish the electrical connection. Therefore, first follow all the steps for assembly and setup.

Pump assembly (Fig. D)

1. Insert nozzle pipe through blue threaded collar.
2. Screw on ball bearing
3. Insert upper nozzle pipe through black threaded collar.
4. Screw black threaded collar on the lower nozzle pipe. Gasket ring will tighten itself firmly.
5. Screw the nozzle holder on the upper pipe.
6. Insert the desired nozzle and fasten firmly.
7. Screw the threaded collar on the upper outlet of the pump filter, but do not fasten it firmly yet.

The pump is now ready for implementation with attached filter wings.

You can tie a rope to the handle to pull the pump out of the water for later maintenance and cleaning work.

Mounting the Pre-filter (Fig. B)

You require a hose with a connecting size of 1" to 1¾". Friction decreases the pump performance, therefore

- use the thickest hose possible
- Keep the hose connections short
- reduce curvature, angles and other connecting elements to a minimum.

Pre-filter assembly:

1. Swing the filter wing on the pump filter up and pull it out.
2. Insert the filter wings on the filter adapter.
3. Screw the stepped hose adapter onto the filter wing adapter outlet.
4. Insert hose.

Establishing the hose connection to the pump:

1. Remove cap on the front side of the pump filter and set aside in a safe place.
2. Open the pump filterclips. Swing open the pump filter. Remove the pump.
3. Insert the stepped hose adapter on the lateral inlet on the pump. Pay attention to the correct alignment. (Fig. C)
4. Re-insert the pump in the provided apertures in the pump filter. (Fig. C)
5. Close the pump filter. Levers engage.
6. Fit the hose onto the stepped hose adapter.
7. Turn the main power regulator on the pump filter all the way open.

Setting up the pump

Do not place the pump directly in the pond floor sludge. Insure a stable even base. Use a stone slab or a heavy construction panel in a bed of sand in the pond for example. To increase stability you can tightly screw the pump onto the panel. The pump filter is equipped with long holes in the pedestal for this purpose.

1. Place the pump:
 - completely under water, with the exception of the nozzle
 - maximum 13 feet (4.0 m) under the surface of the water
 - as horizontal as possible.
2. Set the nozzle pipe to the desired height: loosen the black threaded collar



and pull the pipe on the nozzle holder upwards. Firmly fasten the threaded collar.

3. Loosen the threaded collar and equalize the skew up to 15° by turning the nozzle pipe.
4. Tighten the threaded collar.

Pump filter with attached wing filters (Fig. A)

1. Swing filter wings on the pump filter upwards.
2. Adjust the main flow regulator to the desired flow-through quantity.

Setting up the pre-filter (Fig. B)

1. Place the pre-filter:
 - Completely under water,
 - not directly in the pond floor sludge but slightly elevated on a firm base.
 2. Adjust the pre-filter regulator to the desired flow-through quantity.
- If you use the pre-filter, you can also set up the pump outside of the water. Insure that the pre-filter is submerged and that the pump is constantly supplied with water.

Connecting

Never operate the pump without water. The pump filter protects the pump from large grained dirt particles that can lead to pump blockage.

1. Connect the pump to the power supply. The pump switches on automatically.
2. Unplug the power cord, to turn off the water effect.



7. Playing with the water

Height of the water pattern

The height of the fountain is based on the pump output capacity, the water flow-through quantity, and the nozzle that you implement. You influence the fountain height by turning the main flow regulator on the pump filter or the regulator on the pre-filter.

You should reduce the height of your water effect if there is wind to keep the area surrounding the pond dry.

Shape of the water pattern

The nozzle implemented determines the form of the fountain.

The following nozzles are included in the shipment:

- Vulcan nozzle

When you want to change the nozzle:

1. Unplug the power cord.
2. Unscrew the old nozzle from the nozzle holder.
3. Insert the new nozzle in the nozzle holder and firmly fasten.
4. Adjust the nozzle pipe if required.

You can also use other nozzles from the OASE product range. Ask your dealer.

To avoid blockages: Install the supplied sieve when you use the Volcano nozzle or another nozzle with very fine openings.

Pump filter with attached wing filters (Fig. E)

1. Unplug the power cord.
2. Loosen the threaded collar on the nozzle pipe, remove nozzle pipe.
3. Screw the sieve on the upper outlet of the pump filter.



4. Screw nozzle pipe onto the sieve.
5. Align the nozzle pipe vertically and fasten firmly.

with pre-filter (Fig. F)

1. Unplug the power cord.
2. Pull hose off the pre-filter
3. Unscrew the stepped hose adapter from the filter wing adapter outlet.
4. Screw on sieve.
5. Screw stepped hose adapter onto the sieve.
6. Re-insert hose.

Connect decorative waterspouts

The Nautilus offers you the additional possibility of connecting decorative waterspouts. There is a second outlet with stepped hose adapter on the pump filter for this, suitable for ½" and 1" connections.

Regulate the water quantity for the decorative waterspout with the partial flow regulator on the topside of the pump filter. This reduces the fountain height accordingly.

1. Unplug the power cord.
2. Remove the sealing cap on the outlet for decorative waterspouts.
3. Screw the stepped hose adapter on the outlet for decorative waterspouts.
4. Fit the hose on the stepped hose adapter.
5. Connect the waterspout to the hose and set it up at the desired location.
6. Adjust the water quantity for decorative waterspouts on the partial flow regulator.

Attaching spotlights

There is headpiece on the filter for attaching Lunaqua 10 and Lunaqua 2 spotlights. Please follow the operating instructions for the spotlights.



8. Maintenance/Cleaning

- Observe the safety instructions (chapter 3).
- Clean the filter casing and the sieve as needed, this means when the pump performance lessens.
- To clean the pump, pull the pump out of the pond with the rope, never pull the pump by the cable!

Cleaning the pump filter

Disassembly:

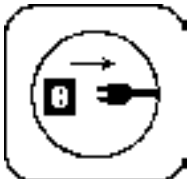
1. Unplug the power cord.
2. Swing the filter wings on the pump filter up and pull it out.
3. Open the filter wings and take them apart.
4. Open the pump filterclips: Swing open the pump filter.
5. Take out the pump and unscrew the water distributor:
Check the gasket ring for damage and brittleness. Replace if required.
6. Unhook the pump filter, and take pump filter apart.

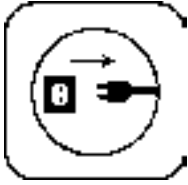
Clean all individual parts under running water with a soft brush.

Under no circumstances should you open the pump yourself! If the motor is blocked with dirt, contact your dealer or an electrician.

With built-in sieve (Fig. E):

1. Unscrew nozzle pipe and sieve from the pump filter.
2. Clean sieve under running water.
3. Refasten sieve and nozzle pipe.





Assembly:

1. Hook the pump filter in the hinge.
2. Screw the water distributor onto the pump.
3. Re-insert the pump in the provided apertures in the pump filter. (Fig. C)
4. Close the pump filter. Levers engage.
5. Put the filter wings back together and insert on the pump filter.

Cleaning the pre-filter

Disassembly:

1. Unplug the power cord.
 2. Pull hose off the pre-filter
 3. Pull out the filter wings.
 4. Open the filter wings and take them apart.
- Clean the filter wings and adapter under running water with a soft brush.

With a built-in sieve (Fig. F):

1. Unscrew stepped hose adapter and sieve.
2. Clean sieve under running water.
3. Screw stepped hose adapter and sieve on the pre-filter.

Assembly:

1. Put the filter wings back together and insert on the filter wing adapter.
2. Fit the hose onto the stepped hose adapter.

Replacing the gasket ring in the nozzle pipe

1. Loosen the black threaded collar and remove the upper pipe of the nozzle pipe.
2. Pull off the threaded collar.
3. Replace gasket ring.
4. Pull the threaded collar over the pipe and fasten on the lower pipe.
5. Loosen the blue threaded collar, align nozzle pipe vertically. Firmly fasten the threaded collar.



9. Winter Storage (Freezing Climates)

The pump must be removed from the pond before the temperature reaches the freezing point. For best results, a thorough cleaning (see Cleaning and Maintenance) is recommended prior to storing the Atlantis pump once it has been removed from operation. It is also recommended after cleaning the pump, that it be stored (above the freezing point) submersed in soft water. This will avoid the possibility of lime scale build-up. Do not submerge the electrical plug. Failure to remove the pump prior to freezing will result in serious damage to the pump and void all warranties.

10. Troubleshooting

Attention: Observe the safety instructions (chapter 3).

- Under no circumstances should you open the pump yourself!
- The connecting line of the pump and the rotor may only be replaced or cleaned by an electrician.



Malfunction	Cause	Remedy
Pump does not turn on	No power, rotor is blocked	Check power supply, have the pump cleaned
Insufficient fountain height or fountain pattern is irregular	The main flow regulator is too tightly closed, nozzle is blocked, filter/sieve dirty, hose blocked/defective, kinked feed lines, excessive loss in the feed lines	Adjust the main flow regulator, insert sieve, clean filter/sieve (chapter 8) Clean/replace hose, check feed lines, reduce hose lengths to the minimum required
Pump shuts down after running briefly	Filter/Sieve is blocked, water temperature too high	Clean filter/sieve (chapter 8) Observe maximum water temperature of 95 °F (35 °C)



11. Replacement parts (Fig. G)

Nautilus 1100 – 2600

- 1 Filter casing L + R
- 3 Stepped hose adapter, spouts
- 5 Water distributor cpl.
- 6 Nozzle cpl. (with sphere and threaded collar)
- 8 Cover (with OASE logo)
- 9 Rubber - buffer
- 10 Suction pipe
- 11 Stepped hose adapter
- 12 Filter - wings
- 13 Adapter with regulator



12. Customer Service

If at any time you experience a problem with your OASE pump that you cannot resolve yourself or that was not addressed in the instructions above, please contact your OASE Dealer for assistance. We urge you not to attempt any repairs or perform any alterations whatsoever as this may cause serious injury, and it will immediately void all warranties. Repair and exchange must be done through a local OASE Dealer.



13. LIMITED WARRANTY

This OASE Nautilus is covered by a **3-year** limited warranty by OASE. The limited warranty period begins from the date of purchase and covers material and manufacturing defects or failure of the product to operate as specified by OASE during the duration of the limited warranty period.

This limited warranty does not cover failure or problems related to:

- Improper installation see this manual for proper installation procedures.
- Modification of the product in any way including attempts to repair the product by someone other than an OASE trained and authorized repair technician.
- Failure to follow proper safety, care and maintenance guidelines as outlined in this manual.

English



It also does not cover those parts of the product that are subject to normal wear and tear during usage of the product, such as:

- Impellers on pumps
- Filter pads and filter medium in filters
- Lamps in lights and UV clarifiers

OASE's sole liability shall be to replace or repair the product covered by this limited warranty. OASE shall not be liable for any consequential damage to any other part of the water garden, pond, water feature, landscape, structure, or the contents of any structure where the product is located or used including no liability for damage or harm to fish, animals, or plants in or around the water garden, pond or water feature.

THE EXPRESS WARRANTIES SET FORTH HEREIN ARE THE ONLY WARRANTIES WITH RESPECT TO THE PRODUCTS, AND THE REMEDIES SET FORTH HEREIN ARE THE EXCLUSIVE REMEDIES IN THE EVENT OF A BREACH OF SUCH WARRANTIES. OASE EXPRESSLY DISCLAIMS ANY IMPLIED WARRANTY OF MERCHANTABILITY OR FITNESS FOR A PARTICULAR PURPOSE. OASE SHALL NOT BE LIABLE UNDER ANY CIRCUMSTANCES FOR INCIDENTAL OR CONSEQUENTIAL DAMAGES OF ANY NATURE, FOR ANY BREACH OF SUCH WARRANTIES OR OTHERWISE. Some states do not allow the exclusion or limitation of incidental or consequential damages, to the above limitation may not apply to you.

Should your OASE product be defective or fail under the terms of this limited warranty, you should return the product to your OASE dealer, along with your original receipt of purchase and any other limited warranty documentation you have, for replacement or repair.

Should you have any question about this limited warranty, please contact OASE at warranty@oase-livingwater.us

Extension of limited warranty period:

Please fill out this OASE Limited Warranty Registration Card or go online to <http://www.oase-livingwater.com> / for a 2-year extension of your limited warranty. Once your registration information has been received by OASE you will receive back by email or post a Limited Warranty Extension Certificate which you should print out and keep with your original receipt of purchase.