

AQUAMAX

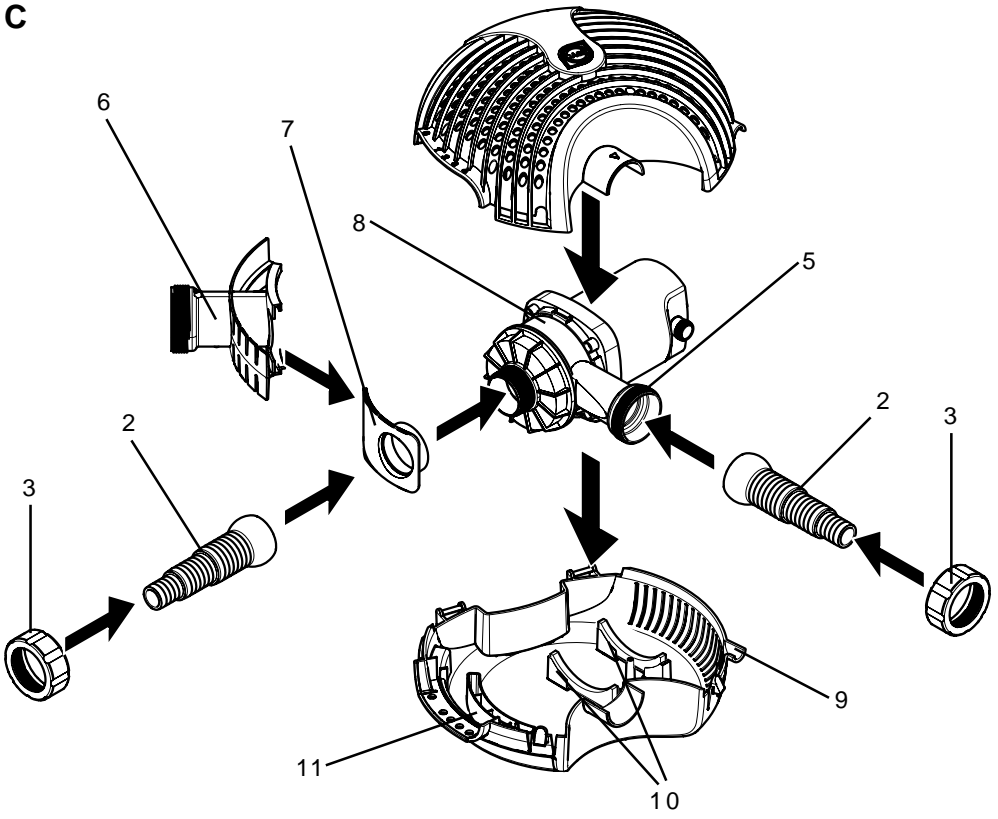
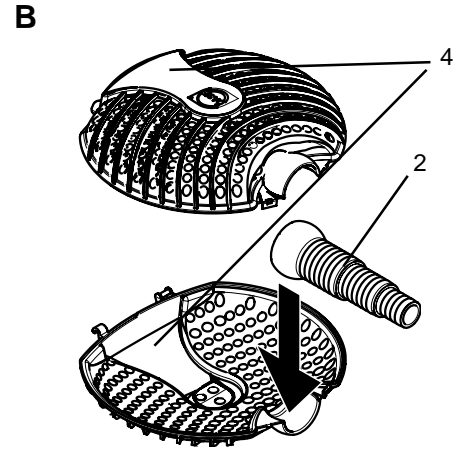
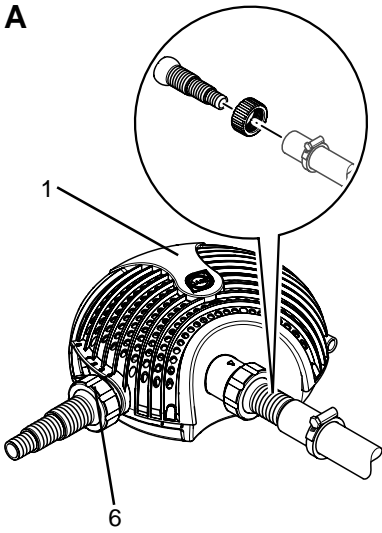
1600SF – 3500SF

Warranty,
Safety and
Operating
Instructions

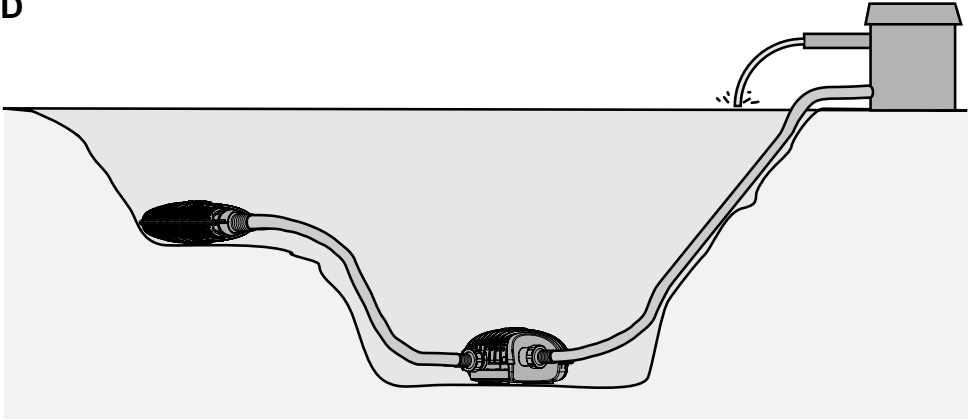
Garantie,
mode d'emploi et
consignes de sécurité

Garantia, Instructivo
de Seguridad y de
Operaciones

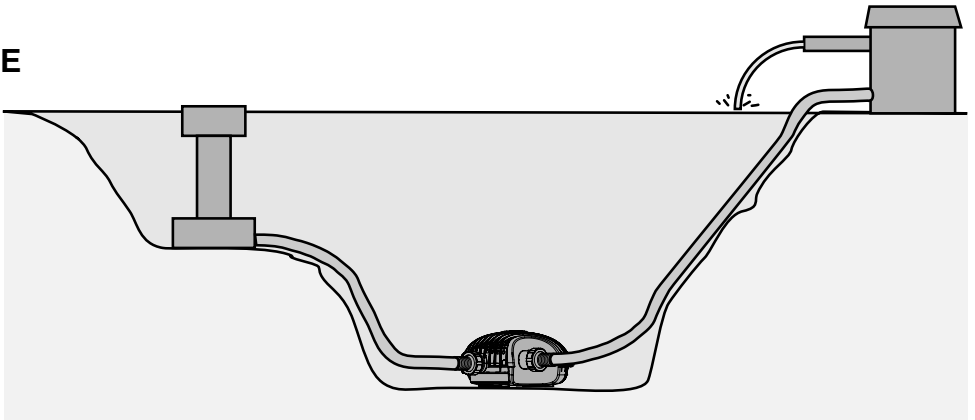




D



E



English

1. Safety and Operating Instructions	5
2. Operational Range	5
3. Safety Instructions	5
4. Electrical Requirements	6
5. Do's and Don'ts	6
6. Placing in servic	7
7. Assembly	7
8. Operation/Maintenance	8
9. Winter care	10
10. Troubleshooting	10
11. Customer Service	11
12. LIMITED WARRANTY	11



1. Safety and Operating Instructions

OASE Aquamax 1600SF – 3500SF

Thank you for purchasing an OASE filter pump. OASE pumps were developed through extensive research and are known world wide for their high-quality construction, energy-efficiency, and environmental safety features. OASE filter pumps do not contain any oil, instead they are cooled and lubricated by water only. Please read the following instructions carefully and thoroughly. Failure to comply with these requirements may result in pump damage or failure, and could cause serious or fatal injury. Close attention to these guidelines will result in many years of pleasure from your OASE pump.

2. Operational Range

Application:

- Outdoor use
- Koi (Japanese carp species) fish basins
- Garden ponds
- Filters and water courses
- The pump is suitable for the conveyance of water from garden ponds and fish basins and can be used with various water features.
- This product is not intended for use by children without proper supervision.
- Keep out of the reach of children.

Water Temperature Range:

- 40-85 degrees Fahrenheit (4-35 °C)

Maximum Water Depth:

- 13 ft (4.0 m)



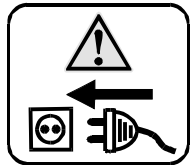
3. Safety Instructions

- Check that the electrical data of the power supply network and that on the type plate coincide.
- Only connect the pump to a grounded power **outlet** (GFI) in accordance with the valid local or national electrical codes (NEC, UL, CSA, IEC...). Contact a qualified electrician with any questions.
- Do not use additional components, extension or connection cables or adapters, which are not grounded.
- Never operate the pump while people are in the water.
- **Be sure that** Garden ponds meet the local and national installation regulations. Contact a qualified electrician!
- Remove the power cable from the electrical socket prior to handling the pump.
- **Note!** In the event of a fault, a maximum of 10 switch-on/off cycles are carried out. Should this prove unsuccessful, the pump will switch off after approx. 40 seconds. Remove the power plug from the electrical socket and clean pump if necessary.
- **Never** carry or pull the pump by the power cord.
- **Always** keep the connection points (power plug) dry.
- Do not operate the pump if cable or casing shows any signs of damage.



- Lay the connection cable such that it is protected against possible damage.
- To avoid potentially dangerous situations, only the manufacturer is allowed to make repairs or cable replacements.

CAUTION: This pump is for garden use. Do not use in swimming pools, spas, hot tubs, etc. Running dry will inevitably cause almost immediate failure and void all warranties implied or otherwise.



4. Electrical Requirements

WARNING: OASE pumps **MUST** be connected to a properly grounded and GFCI (Ground Fault Circuit Interrupter < 30mA) protected 110-120 Volt AC circuit only. The OASE Atlantis Pumps are equipped with a 20-foot 3-prong electrical cord. If the electrical cord provided is not sufficient we suggest that you consult a certified electrician and have them install an additional GFCI outlet within reach of the cord. Consult your local power authority for electrical codes or requirements. Avoid excessive flexing of or abrasion to the electrical cord. Any alteration to an OASE pump will result in non-compliance with UL and Canadian UL listings and requirements. In such instances all warranties implied or otherwise are deemed immediately void.



WARNING: Risk of electric shock - This pump is supplied with a grounding conductor and grounding-type attachment plug. To reduce the risk of electric shock, be certain that it is connected only to a properly grounded, grounding-type receptacle.



5. Do's and Don'ts

- **Do** disconnect the plug from the receptacle before moving or cleaning the pump.
- **Do** disconnect the plug from the receptacle before entering the water area.
- **Do** have all electrical outlets installed and serviced by a licensed electrician.
- **Do** disconnect the pump from the electrical outlet at the first sign of any problem.



- **Don't** use the pump when there are people in the water.
- **Don't** cut the cord or remove the plug from the cord.
- **Don't** remove the grounding pin from the plug.
- **Don't** carry or pull the pump by the electrical cord.
- **Don't** use extension cords.
- **Don't** attempt to open the pump/motor enclosure.
- **Don't** remove any labels from the pump or electrical cord.
- **Don't** pinch, twist or damage the electrical cord. A minor cut even if only in the outer shell could allow water to reach the motor enclosure and damage the pump. If you notice any damage to the cord remove the pump and store in a dry place. Consult your local OASE Dealer for further instructions. Please note that any damage to the electrical cord will void all warranties and could cause serious electrical shock hazard.



6. Placing in service

- You must read and observe the safety instructions (chap. 3) before placing in service!
- The Pump turns on automatically when you establish the electrical connection. Therefore, first follow all the steps for assembly and setup.



7. Assembly (Fig. A, B, C)

You require a hose with a connection size of 1" to 1 1/2". Friction decreases the performance of the filter feed pump, consequently

- use the thickest hose possible
- keep the hose connection short
- keep the use of elbows, angles, and other connecting elements to a minimum.



Important! To avoid pressure loss, saw off the stepped hose adapter at the appropriate point for the respective hose.

The pump is delivered in the filter shell (1). Assemble the other Aquamax components as follows:

Connecting to the water filter

1. Push the threaded collar (3) over the stepped hose adapter (2).
2. Fasten the hose to the water filter on the stepped hose adapter and press it firmly into place, if required secure it with a hose clamp (Fig. A).
3. Insert the stepped hose adapter into the pump discharge (5).
4. Screw the stepped hose adapter tight with the threaded collar.
5. Connect the other end of the hose to the water filter.

Connecting to the satellite filter

6. Push the threaded collar (3) over a stepped hose adapter (2).
7. Fasten the hose to the satellite filter on the stepped hose adapter and press it firmly into place.
8. Insert the stepped hose adapter in the inlet regulator (6) of the filter shell with the pump (1).
9. Screw the stepped hose adapter tight with the threaded collar.

Satellite filter (Fig. B)

10. Fasten the free end of the hose that is connected to the inlet regulator (6) of the pump to the stepped hose adapter and press it firmly into place.
11. Place the stepped hose adapter with the semi-circular end in the discharge opening receptacle provided for it in the lower filter shell.
12. Hook the hinge of the lower filter shell (4) into the hinge of the upper filter shell (4).
13. Close the two filter shells together.
14. Press the engagement point on both sides of the discharge opening firmly together until they audibly click into place.

Lay out the hose lines

Lay the hose lines to the water filter and to the Aquamax satellite filter in such a manner that they are protected to the extent possible to avoid damage. Ensure that the hose lines form no loops if possible. Without loops the polluted water flows without obstruction and the Aquamax will clean your pond more efficiently.



Set-up pump and satellite filter (Fig. D)

Place the pump and the satellite filter in a stable position in depressions on the pond floor (max. 13 ft [4.0 m] under the water surface). If the satellite filter floats to the surface at this position, then you can weight it by filling it with filter granulate or gravel. Ensure however that the pump does not suction in this material. Materials that could pass through the hose and get into the pump must be safely contained in a net or small bag.

Position the pump either horizontally on its flattened side, or vertically with the hinges on the filter shell facing down.



8. Operation/Maintenance

Caution! Strictly observe the safety instructions in section 3.

To operate the Aquamax you will additionally require either a flow-through filter or a pressure filter.

1. Lower the Aquamax with the satellite filter to the desired position in the pond. Comply with the maximum immersion depth of 13 ft (4.0 m) for the filter feed pump.
2. Connect the power cord to the mains power to start the Aquamax.
3. Disconnect it from the mains power to switch it off.

The pump should operate night and day to optimally clean your pond.

Adjust the inflow via the satellite filter

You can lock the filter shell inlet regulator (6) in 5 different positions (position 0 to 4). In position "0" the connection between the pump and the satellite filter is totally closed. The pump only pumps water through its own filter. The further you move the inlet regulator towards position "4", the greater the opening to the satellite filter. In position "4" the pump only pumps water through the satellite filter.

Caution! If you are operating the pump underwater, then a filter (like the satellite filter or skimmer) must always be connected to the inlet regulator (6), otherwise small fish, frogs, or stones, could be suctioned into the pump if the inlet regulator is completely open.

Operation with the skimmer

As an alternative to the satellite filter there is an additional application using the Aquamax to improve the water quality of your pond:

This is operation with an in-pond surface skimmer (Part Number 57395) (Fig. E) instead of the satellite filter. The Aquamax suction dust, leaves, and other debris from the water surface through the skimmer. The cleaned water then flows through the water filter back into the pond.

The following positions of the inlet regulator are possible for dependable operation with the skimmer:



Inlet regulator position (6)					
Type Aquamax	0	1	2	3	4
1600SF				X	X
2200SF				X	X
3000SF			X	X	X
3500SF		X	X	X	X

Cleaning/Maintenance

Caution! Strictly observe the safety instructions in section 3.

If your pond is highly polluted, or if the pump performance noticeably decreases, then you should thoroughly clean the filter shells, the satellite filter, as well as the pump from time to time. In addition it may be necessary to clean the pump's impeller.

Caution! Never open the motor housing under any circumstances! If the rotor must be replaced or if the motor is defective, then please contact your dealer.

Disassembly and cleaning (Fig. C):

1. Unplug power plug.
2. Take the filter shell with the pump out of the pond using the hauling rope. Do **not** lift the pump by the power cord.
3. Unscrew the threaded collar on the hose to the satellite filter.
4. Remove the stepped hose adapter together with the hose to the satellite filter.
5. Unscrew the threaded collar on the hose to the water filter.
6. Remove the stepped hose adapter together with the hose to the water filter.
7. Open the filter shell by pressing the engagement points in on both sides of the discharge opening to the water filter and then open the filter shell.
8. Take the pump out (8) of the filter shell.
9. Take the inlet adjustment (6) from its guide (7).
10. Unscrew the pump housing.
11. If necessary, clean the impeller with a brush. If the rotor is damaged, then do not replace it yourself; rather take the pump to your authorized dealer for repair.
12. Clean the filter shells (1,4), the stepped hose adapter (2) and the inlet regulator (6) with clean water and a brush.

Assembly after cleaning

1. Unscrew the pump housing again.
2. Replace the inlet regulator (6) by pushing it on its guide (7).



3. Place the pump (8) in the filter shell mountings provided for it (1). Ensure that the inlet regulator is correctly seated in its guide rail in the filter shell, and that the power cord is correctly positioned in the opening provided (9).
4. Close the filter shell and press together on the two engagement points, until they audibly click into place.
5. Firmly tighten the threaded collar on the stepped hose adapter of the inlet regulator (6).
6. Firmly tighten the threaded collar on the stepped hose adapter of the pump discharge (5).
7. Return the pump with filter shell to the pond.
8. Plug the power plug into a wall outlet. The pump will start automatically.

9. Winter care

- This filter pump is frost-proof. Thus it can remain in the water during the winter.
- Before starting the pump for the new season, check all parts for damage, particularly the lines.
- If you take the pump out of the pond in the winter, then you must store it in a container with water. This prevents debris from settling and the gaskets will remain intact.
- Never immerse the power plug under water.

10. Troubleshooting

Caution! Strictly observe the safety instructions in section 3.

- Never open the motor housing under any circumstances.
- The pump's power cord can only be replaced by a specialist.



Malfunction	Cause	Remedy
Pump is not running	<ol style="list-style-type: none"> 1. There is no power 2. Impeller is blocked 	<ol style="list-style-type: none"> 1. Check the pump's power supply 2. Clean impeller (section 8)
Water flow is insufficient	<ol style="list-style-type: none"> 1. Filter shell/satellite filter is dirty 2. Hoses are plugged/ defective 3. Hoses are kinked 4. Excessive loss in the hose lines 	<ol style="list-style-type: none"> 1. Clean filter shell/satellite filter 2. Clean/replace hoses 3. Check hose lines and line them up straight 4. Reduce the hose line lengths to the minimum required and use hose lines with a larger diameter.
Pump switches off after a short period of operation	<ol style="list-style-type: none"> 1. Filter shell is plugged 	<ol style="list-style-type: none"> 1. Clean filter shell



11. Customer Service

If at any time you experience a problem with your OASE pump that you cannot resolve yourself or that was not addressed in the instructions above, please contact your OASE Dealer for assistance. We urge you not to attempt any repairs or perform any alterations whatsoever as this may cause serious injury, and it will immediately void all warranties. Repair and exchange must be done through a local OASE Dealer.



12. LIMITED WARRANTY

This OASE product is covered by a **3-years** limited warranty by OASE. The limited warranty period begins from the date of purchase and covers material and manufacturing defects or failure of the product to operate as specified by OASE during the limited warranty period.

This limited warranty does not cover failure or problems related to:

- Improper installation – see this manual for proper installation procedures.
- Any modification or repair of the product in any way other than by OASE trained and authorized repair technician.
- Failure to follow proper safety, care and maintenance guidelines – as outlined in this manual.

This limited warranty does not cover those parts of the product that are subject to normal wear and tear during usage of the product, such as:

- Impellers on pumps
- Filter pads and filter medium in filters
- Lamps in lights and UV clarifiers

OASE's sole liability shall be to replace or repair the product covered by this limited warranty. OASE shall not be liable for any consequential damage to any other part of the water garden, pond, water feature, landscape, structure, or the contents of any structure where the product is located or used – including no liability for damage or harm to fish, animals, or plants in or around the water garden, pond or water feature.

THE EXPRESS WARRANTIES SET FORTH HEREIN ARE THE ONLY WARRANTIES WITH RESPECT TO THE PRODUCTS, AND THE REMEDIES SET FORTH HEREIN ARE THE EXCLUSIVE REMEDIES IN THE EVENT OF A BREACH OF SUCH WARRANTIES. OASE EXPRESSLY DISCLAIMS ANY IMPLIED WARRANTY OF MERCHANTABILITY OR FITNESS FOR A PARTICULAR PURPOSE. OASE SHALL NOT BE LIABLE UNDER ANY CIRCUMSTANCES FOR INCIDENTAL OR CONSEQUENTIAL DAMAGES OF ANY NATURE, FOR ANY BREACH OF SUCH WARRANTIES OR OTHERWISE. Some states do not allow the exclusion or limitation of incidental or consequential damages, to the above limitation may not apply to you.

Should your OASE product be defective or fail under the terms of this limited warranty, you should return the product to your OASE dealer, along with your original receipt of purchase and any other limited warranty documentation you have, for replacement or repair.

Should you have any question about this limited warranty, please contact OASE at warranty@oase-livingwater.com

Extension of limited warranty period:

Please fill out the OASE Limited Warranty Registration Card or go online to <http://www.oase-livingwater.com/> for a **2-year** extension of your limited warranty. Once your registration information has been received by OASE you will receive back by email or post a Limited Warranty Extension Certificate, which you should print out and keep with your original receipt of purchase.